

# The **TREE CITY** Bulletin

VOLUME 30:2 – FALL 2025

## ***What's Inside...***

- Council Members (2)
- Kent Climate Action Plan Update (3)
- City Finances (4-5)
- Utility Billing (5)
- Main Street Kent Update (6-7)
- Community Development Block Grant (8)
- Furnace & Hot Water Tank Program (9)
- Fire Safety (10)
- East Main Street Gateway (10)
- Water Service Lines (12-13)
- Back flow & Meter Holidays (14)
- Help Us Get The Lead Out (15)
- Parks & Recreation (16-18)
- Festival of Lights (19)
- Business Ignite (20)
- Yard Waste Info (20)
- 2025 Fall Brush Collection Info (21)
- 2025 Fall Leaf Collection Info (22)



# The TREE CITY Bulletin

## Council Members

### Mayor & President of Council

Jerry T. Fiala  
330.678.8007  
jerry.fiala@kentohio.gov

### Ward 1

Melissa Celko  
440.463.9425  
melissa.celko@kentohio.gov

### Ward 2

Jack Amrhein, President Pro Tem  
330.835.8639  
jack.amrhein@kentohio.gov

### Ward 3

Robin Turner  
330.221.8860  
robin.turner@kentohio.gov

### Ward 4

Chris Hook  
330.842.6635  
chris.hook@kentohio.gov

### Ward 5

Heidi L. Shaffer  
330.256.4346  
heidi.shafferbish@kentohio.gov

### Ward 6

Jeff Clapper  
330.842.6563  
jeff.clapper@kentohio.gov

### Council-at-Large

Michael DeLeone  
330.687.2359  
michael.deleone@kentohio.gov

Gwen Rosenberg  
440.665.4327  
gwen.rosenberg@kentohio.gov

Roger Sidoti  
330.678.3381  
roger.sidoti@kentohio.gov

## Who To Call At The City of Kent...

Emergency – Police, Fire, Ambulance .....	9-1-1
After Hours Non-Emergency Concerns .....	330.673.7732
Building Division – Building Permits .....	330.678.8107
Income Tax Division .....	330.678.8103
Clerk of Council .....	330.678.8007
City Manager's Office .....	330.676.7500
Door-to-door solicitation, special event permits	
Community Development Department .....	330.678.8108
Economic development, housing rehab, zoning	
Engineering Division – Street and Sidewalk construction .....	330.678.8106
Fire Department - Non-Emergency .....	330.673.8814
Health Department .....	330.678.8109
Animal bites, birth/death certificates, food service inspections, pest control	
Parks & Recreation Department .....	330.673.8897
Police Department - Non-Emergency.....	330.673.7732
24-hour calls, stray animals	
Police Department - Investigations.....	330.673.7733
Police Department - Administration.....	330.673.3221
Republic Services of Ohio Hauling, LLC - Residential Trash and Recycling.....	1.800.247.3644
Portage County Recycling Center.....	330.678.8808
Service Department.....	330.678.8105
Yard Waste Transfer Site, signs, traffic lights, street maintenance, trees, water/sewer problems	
Utility Billing – Water, sewer, storm water and recycling bill.....	330.678.8104

### **Trash Collection Reminder**

Please be reminded that City Ordinance 521.08 states:

Collection Time Period: Each container placed at the curb or alley, and each other item set out for collection, shall be placed at the location no earlier than 7:00 pm of the day before collection, in the locality as established by the City's Refuse and Recycling Contractor.

Container Retrieval: The empty solid waste receptacles and recycle storage containers shall be removed from the curbside by 7:00 pm the day collection has taken place.



### **SIREN TESTING**

The City of Kent tests the siren system twice per month:

**1st Wednesday at 11:00 am**  
**3rd Wednesday at 6:30 pm**

The tests run for 3 minutes each time. In the event of a real emergency, the sirens will be set off 3 times for a total of 9 minutes.

The Tree City Bulletin is published semi-annually by the City of Kent, and is provided to inform residents and businesses regarding City programs and services. Questions or comments regarding the newsletter may be directed to the City Manager's Office - 301 S. Depeyster - Kent, Ohio 44240 – 330.676.7500. Unless otherwise stated, all programs and services described in this publication are intended and provided for City of Kent residents only. **This publication is printed on recycled paper.**



# The TREE CITY Bulletin



## City of Kent's Climate Action Plan (CAP) – Resources For Receiving Updates On The City's Sustainability Work

Are you interested in learning more about the City's CAP and other sustainability efforts? Be sure to visit the City website's Sustainability Overview page and sign up to receive the Sustainable Kent News e-newsletter!

The Sustainability Overview page can be found under the Business, Building & Development section of the City's website. It provides access to the full 2023-2028 Climate Action Plan, as well as CAP implementation timelines, the City's greenhouse gas inventories, sustainability legislation passed by the City, and access to associated plans and studies as they become available to share. As more items are developed out of the CAP and the City's overall sustainability work, they will continue to be added to this website.



Be sure to visit often for the latest information at: <https://www.kentohio.gov/business-building-development/sustainability-overview/>.

Another option for receiving detailed information about the City's sustainability work is to sign up for the Sustainable Kent e-Newsletter, which is sent out quarterly via the City's sustainability email list-serv. While these newsletters are posted to the Sustainability Overview website, signing up for the list-serv allows the City to send not only the e-newsletter, but additional sustainability related information out to the community as needed. To find instructions for how to sign up, please visit: <https://www.kentohio.gov/business-building-development/sustainability-overview/sustainable-kent-e-newsletter/>

If you have any questions (or suggestions), or would like to connect around the City's CAP, feel free to contact the City's Sustainability Coordinator, Julie Morris, at: [julie.morris@kentohio.gov](mailto:julie.morris@kentohio.gov).

## City Finances: A look under the hood

By Dave Ruller, City Manager

For years, the Chamber of Commerce invited me to provide a monthly “City Update” breakfast presentation - which post COVID has settled into a twice a year luncheon schedule.

A lot happens in the course of a year so I have to talk at the pace of an auctioneer to download as much as I can in 60 minutes, and by the end I’m inevitably over the time limit and still talking as everyone walks out the door.

City services and programs cover such a wide range of topics that it’s hard to pick and choose but after doing a monthly update for so many years, I can anticipate what topics are most likely to garner affirmative head-nods and which topics will inspire cell phone checks.

That exercise can be a bit humbling as some of the administrative stories that I am most proud of turn out to be of the least interest. I get it, if I didn’t do this work for a living, I’d really just want to know the stuff that affects me personally, e.g., what new restaurants are opening up? What construction projects are getting started? When will the new section of the hike and bike trail be finished? When is leaf and brush collection starting? What’s new for snow season?

As a result, I select topics that are heavy on external outputs that touch people in their daily lives rather than the internal happenings of the City administration - but I was pleased to recently receive a request to share more internal facts and figures on the state of our City finances. I’ve found my people.

Each year I provide two lengthy written updates in our City Budget and our Comprehensive Annual Financial Report (CAFR) that provide the kind of numbers-crunching narrative that appeals to administrative wonks like me and those that might enjoy a closer look under the City’s administrative hood. If that’s not you, I promise to resume my fun project summaries in my next article.

### Excerpts from the City’s CAFR and 2025 Budget Message

• The emergence of COVID19 in 2020 and resurgence in 2021 (Delta variant) and Omicron in 2022, created an unprecedented disruption of lives, jobs, and public activities that are the foundation of Kent’s economy. As a result, Kent experienced major economic displacement across the leading sectors of the local economy that were impacted by COVID, particularly hospitality businesses and higher education which have been the drivers of Kent’s recent prosperity.

• After starting 2020 with early gains in income taxes (up 8%), pandemic related job losses piled-up by mid-summer, reversing the gains and producing a decline in City income tax receipts (-6%). Fortunately, the timing of employee buy-outs at Kent State University combined with COVID related federal and state emergency pandemic funding, enabled the City to bridge those income tax dips in 2020 and 2021.

• Wage and income tax growth was healthier than expected with 8 out of 12 months showing income tax increases from 2022 to 2023 (a \$881,370 increase) – followed by 7 out of 12 months showing income tax increases from 2023 to 2024 (another \$770,656 increase) making the three-year totals (2022 to 2024) the largest successive years of income tax growth in the City’s history.

• Large construction projects, including the new City Hall and new KSU College of Business Administration building, have provided a welcome boost in contractor income taxes.

• Kent State University (KSU) remains the City’s largest employer, contributing 28.6% of total municipal income tax revenues in 2023, down from 29.2% in 2022 (and a high of 40% a decade ago). Kent State’s income tax contributions are forecast to decline as the University rolls out its new Transformation 2028 (T28) program; a multi-year plan to cut the University’s budget by 30% due to reductions in State funding for higher education. The University’s cost cutting strategy includes delaying capital improvement projects, downsizing the University’s property/building inventory, eliminating, or consolidating low enrollment majors, and reducing staff and faculty head count through attrition and retirement.

• The 11.5% increase in income taxes in 2022, followed by successive 5% and 4% increases in 2023-24, were positive economic indicators, particularly given the employment reduction at Kent State University. Current economic conditions offer mixed reviews, with Kent’s top service and manufacturing companies performing very well and leveraging growth in market share in the post COVID economy. By contrast, the small business sector has had challenges regaining its footing and pivoting operations to match the new market conditions, resulting in some small business downsizing and closures.

• Between 2011 and 2015 the City’s downtown redevelopment produced record setting investments. 2019 showed signs of a softening in the local construction market but the arrival of COVID19 in 2020 pushed investment to their lowest levels in the last 20 years. 2021 produced an investment rebound, rising from \$6.3 million to \$38 million, and 2022 construction investments stayed above the 20-year average at \$26.3 million. By 2023-24, the pent-up construction demand produced \$46,972,659 in new investments, the 3rd highest investment total in the last 25 years.



# The TREE CITY Bulletin

- The resale housing market remained strong as prices held their value, housing supply remained tight, and the duration of market listings before sale was notably short – all of which likely contributed to Kent's real estate valuation exceeding the County average. The student housing market began to show early signs of possible oversupply as occupancy rates were steady (80-95%) for the newer student housing properties but the older properties showed lower occupancy rates, landing in the 50% to 65% range.

- The Davey Tree SEED campus construction was the largest project under construction in 2024. In small business investment news, the Blind Squirrel Pub opened for business, Federales Street Taco's opened, Helix Company opened, Evelyn Dickerson relocated, Klaben Jeep Expansion, Renewable Lubricants, Bliss Ohio, UH Urgent Care facility, Copen Machine expansion, Marco's Pizza, Sun in Leo, Tiger Rae Boutique, The Flourish Plant Market, and Mamacita's opened. The former Arby's was demolished to make room for the new Rascal House restaurant, the new Beware of the Leopard bar opened, 101 Bottles of Beer remodeled, Lee Angelos opened, Alley Mac opened, and the Kent Apparel Company opened. These new additions have helped keep commercial vacancy rates low despite the downturn in small business storefront shopping after the pandemic.

- The local labor market remains tight with Kent's unemployment rate low enough to be classified as "full employment" – outperforming state, regional and county figures.

- The City continued to work with Franklin and Brimfield townships in 2024 to recruit new businesses and expand business development opportunities within the Joint Economic Development District (JEDD) boundaries. As a result of the JEDD partnerships, the City received \$948,036 (\$787,973 Franklin JEDD, \$160,063 Brimfield JEDD) as its combined share of JEDD income taxes in 2024.

- There are a couple of private mixed-use projects that have stalled amidst the post-Covid fallout in downtown Kent that represent another \$30 million in pending investment. The City is evaluating infrastructure investment options, i.e., public space enhancements, pocket parks, etc., that might re-energize those projects. Although these new investments won't solve all of the City's revenue uncertainty, the new housing supply, particularly in downtown, should be a source of new customers for Kent businesses.

## A Note from the Director of Budget and Finance

Rhonda Hall

### Utility Billing:

Our Utility Billing Department has successfully completed upgrading our antiquated utility billing software to a more user-friendly program. The conversion process was a challenge, but subsequently, the new program will simplify the process or us to assist our customers in early detection of water leaks, water analysis by our engineers, and streamlined invoice and payment methods.

The City of Kent would like to thank all the residents and businesses for their patience during the conversion. The first billing on the new system occurred at the end of July, and the first payment with the new payment portal, Invoice Cloud, will be in August.

As we are moving forward with the improved software, please do not hesitate to contact me or the Utility Billing Department with any concerns you may have.

If you are already enrolled in automatic payments via EFT (Electronic Funds Transfer), you do not need to take any action. If you currently use the online payment system to make payments, please re-register with our NEW payment portal, Invoice Cloud, by visiting their website at <https://www.invoicecloud.com/CityofKentOH>. There are multiple payment options, including paperless billing.



WOOOHOOO WE DID IT  
**THANK YOU  
EVERYONE!**

# The TREE CITY Bulletin




## Main Street Kent Update

At **Main Street Kent**, it's been a year full of public art and beautification projects, small business promotions, and community events! We look forward to continuing to make our downtown a fun, vibrant and thriving community.

This year's hanging flower baskets have really been impressive! Thanks to lead sponsor Smithers-Oasis, many businesses, organizations, community members and our wonderful city for helping make this such a beautiful spectacle in our downtown. The Adopt-a-Spot flowerbeds are also looking fantastic, with an abundance of perennials returning each year and a beautiful selection of annuals. We're grateful to our volunteer gardeners and sponsors who make Kent look so good. It really makes an impact.

**2025**  
**Adopt-A-Spot  
Hanging Basket  
Sponsors**

Smithers-Oasis  
Zephyr Pub  
EnviroScience  
A grateful Kent family ❤️  
Barrio Tacos  
Bill and MaryAnn Willoughby  
Chrystal Shook  
DLR Accounting Solutions  
Each + Every  
Emerson Consumer Care  
Evolve Auto  
Franklin Square Deli  
Just Add Cookies  
Kent State Hotel  
KidsKare Kent Campus Early Learning Center  
Nick Billock, Realtor® LPT Realty  
PARTA  
Portage Community Bank  
Robin & Eric Leichter  
Taco Tontos  
Talk On: Speech and Occupational Therapy  
The Kent Flea  
Townhall II Integrated Health Network  
Young & Associates

**2025**  
**Adopt-a-Spot  
Flower Beds  
Sponsored By - Planted By**

Alyssa Robinson - *In Loving Memory of Cheri Mazey*  
AMETEK - *Mary Jo Cline*  
Belli & Streit Orthodontics - *Nadine Gomez & James Morgan*  
Bissler & Sons Funeral Home & Crematory  
Bookworm Book Club  
Bower's Lawncare  
Brimfield Insurance - *Standing Rock Cultural Arts*  
Christ Presbyterian Church  
College Town Kent - *Elizabeth Michel*  
Daisy Pops  
Darrin & Michelle Hartman & Family - *Rosie Tran*  
Deb Graham Paisley - *RE Anderson*  
Downtown Gallery - *The Kent Stage*  
Each + Every  
Eric Does Data  
Envisage Group - *Maggie Kelling & Marcia Harding*  
Flynn Keith & Flynn - *Barb Keener*  
Flynn & Paoloni - *The Dragonfly*  
Haymaker Farmers' Market  
Kent Jaycees  
Kent Junior Mothers  
Kent Rotary Club  
Kent State Hotel & Conference Center  
Leah Patterson - *In Memory of Jeff Patterson*  
Mayor Jerry & Sue Fiala - *Billy & Sarah Dombrowski*  
Metis Construction Services  
Over Easy at the Depot - *Girl Scout Troop 91527*  
Ray's Place - *Elizabeth Michel*  
Sue Nelson Designs  
The Ball Family  
The Berthiaumes, Howard Hanna Real Estate  
The Light Church  
The Swansiger Family  
Theodore Roosevelt HS Forestry & Landscape Mgmt. & Kent Peace Garden  
Transohio Properties - *The Arthur Family*  
Williams, Kratcoski, Griffin & Can - *In Memory of Molly Bargerstock*  
Young & Associates



# The TREE CITY Bulletin

If you haven't yet seen the banners on the W. Main St. bridge, take a cruise through this new "outdoor gallery" in downtown Kent! BridgeWorks is a temporary art installation on all of the light posts spanning the bridge over the Cuyahoga River. It features designs by eight artists: Arch Budzar, Andy Krebs, Jenniffer Omaidt, Ian Marshall, Mickey Mencin, Meaghan Reed, Nicole Reese, and Kristen Mimms Scavnick. Take a stroll or ride along the bridge to see these colorful works of art!



The KENT Sign, located at the corner of N. Water St. and the Fairchild bridge, got new artwork installed inside its letters this spring! This revolving art display now showcases a fun, outdoor recreation themed design by Kristina Gauer. Stop for photos and look at it up close; it's great!



With over 60 episodes, the Kent In Good Company podcast is now in its fourth season, thanks to our gracious host Katy Thomas. Tune in to your favorite podcast platform to listen, and learn about some hidden gems in Kent, what makes our small business owners choose to do business here and more. <https://mainstreetkent.org/discover/in-good-company/>



*For more information about Main Street Kent or to subscribe to our weekly newsletter, please visit [www.mainstreetkent.org](http://www.mainstreetkent.org), email [info@mainstreetkent.org](mailto:info@mainstreetkent.org) or call 330-677-8000.*



## Upcoming Events

Save these dates so you don't miss any of the fun! Visit [www.mainstreetkent.org](http://www.mainstreetkent.org) and Main Street Kent social media for times and other details as the dates get closer.

- **Kent Rocks Music Festival - Fri., Sept. 12** - Free, live music all over downtown Kent. [www.kentrocks.com](http://www.kentrocks.com)
- **Kent Oktoberfest - Sat., Oct. 4** - German food, seasonal beverages, steinholding competitions, live music, dancing and fun.
- **Kent Rainbow Weekend - Oct. 17 & 18** - An inclusive celebration of all people, featuring a 5K, music, storytelling event, vendor market, activities, decorations and more.
- **Family Friendly Halloween - Fri., Oct. 31** - trick-or-Treat at the downtown businesses before the ghosts and goblins come out for the night!
- **Small Business Saturday - Nov. 29** - We're proud to be a part of the shop small movement supporting our locally owned and operated businesses on the same day as Festival of Lights!
- **Cookie Walk - Sun., Dec. 7** - This holiday cookie collecting excursion pairs perfectly with holiday shopping at Kent's many cool, local shops.
- **Unsilent Night - Sun., Dec. 14** - A community sidewalk promenade where participants create an ambient cacophony of recorded bells, harps and electronic instruments composed by Phil Kline. Learn about it at [www.unsilentnightnight.com](http://www.unsilentnightnight.com).

# The TREE CITY Bulletin



## CITY OF KENT

### **2025-2029 FIVE-YEAR CONSOLIDATED STRATEGIC PLAN AND 2025 ANNUAL ACTION**

The City of Kent submitted its 2025-2029 Five-Year Consolidated Strategic Plan and 2025 Action Plan to the U.S. Department of Housing and Urban Development in June. The five-year plan outlines the City's funding priorities and objectives for the City's Community Development Block Grant (CDBG) allocations for the specified five-year period. The 2025 Action Plan identifies the specific projects that will be funded during the 2025 CDBG program year, which begins on August 1, 2025 and extends through July 31, 2026.

CDBG funds received by the City of Kent must be used to benefit low- to moderate-income individuals and families residing within the City. CDBG funding is allocated to projects that align with the following objectives identified by the City:

- promote suitable living environments by allocating CDBG resources to support infrastructure and public facility improvement activities that will assist with addressing the problem of aging and insufficient infrastructure in residential areas that have high concentrations of low-to-moderate income households;
- promote safe and decent housing for low- to moderate-income households throughout the City by providing owner-occupied housing rehabilitation and an energy efficiency repair program that ensures basic housing needs are met, and
- provide assistance to nonprofit organizations that provide needed programs, public facilities and supportive services for low-to-moderate income persons living in the community.

The City's annual CDBG funding allocation supports a variety of projects and programs, including capital improvements that address aging infrastructure in older residential neighborhoods on the south side of town; the promoting of energy efficiency through a free furnace and hot water tank targeted replacement program for low- to moderate-income households; and needed supportive services, such as homeless and small business counseling services, offered through local nonprofit organizations.



# The TREE CITY Bulletin



## FURNACE & HOT WATER TANK REPLACEMENT PROGRAM *FREE to qualifying households*

The ***Kent Furnace Inspection and Targeted Replacement Program*** is available to income-eligible **homeowners** living within Kent City limits. This program provides:

- 1) **FREE** furnace inspections, cleaning, tune-up, repairs and *possible furnace replacement*;
- 2) *possible replacement* of hot water tank and/or installation of expansion tank;
- 3) one combination carbon monoxide/smoke alarm and additional smoke alarms, as needed;
- 4) referral to additional energy conservation programs; and 5) *energy conservation education* to further increase energy efficiency and reduce heating costs.

***Replacement of an inefficient furnace is one of the simplest and most effective ways to improve energy efficiency and reduce the impact on the environment.***

The Community Action Council of Portage County operates this program through a grant from the City of Kent Community Development Department. Licensed heating and plumbing contractors obtain permits and inspections issued by the City of Kent Building Department.

**In order to qualify for the program**, you must:

- 1) own and occupy your single family home;
- 2) meet low-to-moderate income guidelines, and
- 3) complete the application and provide all required documentation.

Elderly applicants, disabled applicants, and families with minor children are given priority.

*The program is designed to offer a one-time service.*

To obtain additional information please contact Kailyn Cyrus, the City's Zoning and Grants Coordinator, at 330-678-8108 or Kailyn.Cyrus@kentohio.gov or the Community Action Council of Portage County (CAC) by telephone at 330-297-1456, or visit CAC's website at [www.cacportage.net](http://www.cacportage.net).

## Fall Fire Safety in Kent: What to Know and How to Stay Safe

**Lt. Rob Jacob**

As the weather cools down and families start using fireplaces, space heaters, and fire pits to keep warm, it's important to think about fire safety, both inside and outside the home. A small mistake with heat or flame can quickly turn into something much bigger, but with a little planning, most fires can be prevented.

- If you're using a fire pit or outdoor fireplace this fall, make sure you're doing it the right way. In Kent and surrounding communities, outdoor fires are allowed, but only if you're using clean, dry firewood, no leaves, no yard waste, and definitely no trash. Fires need to be in a safe spot, away from homes, garages, or sheds. Please call the Kent Fire Department's non-emergency number, (330) 676-7393, to let them know before you start. It's a simple step that could help avoid confusion or emergency calls from concerned neighbors. The fire department will still need to respond if the fire or smoke becomes hazardous or offensive. Any fires found to be endangering will need to be extinguished. As always, if you are having an emergency, call 911.

- Inside the house, this is the time of year when heaters, furnaces, and wood burners start getting used again. If you haven't had your fireplace, chimney, or furnace checked in a while, it's worth having someone look at it. Even a basic cleaning can help prevent problems like chimney fires or dangerous gas buildup.

- Space heaters are another cause for concern. If you use them, make sure they're a newer, UL-listed heater on a solid surface and not near anything like curtains, blankets, or furniture. The UL safety certification means the heater is designed to shut off if it gets knocked over and has a built-in thermostat to prevent

overheating. Plug them straight into the wall, not into a power strip or extension cord. And turn them off before going to bed or leaving the house. Working smoke and carbon monoxide detectors will let you know if there is a problem while you're asleep.

- When storms roll through, especially the heavy rain and wind we sometimes get from hurricanes out east, there's a bigger chance of losing power. If you're using a generator, keep it outside and away from doors or windows to avoid carbon monoxide. Never use a grill or camping stove indoors, even for a short time. It's not worth the risk.

- People often charge phones, tablets, and laptops more during storms or cold nights. The National Fire Protection Association recommends charging electronics directly on the wall, not under a blanket, on a couch, or under your pillow. These devices can overheat, especially if covered, which can lead to a fire.

- Candles are nice in the fall, but they can be risky too. If you're using real candles, keep them away from combustibles, where kids or pets can't knock them over, and blow them out before leaving the room. Battery-powered candles are safer and last a long time.

Fire safety doesn't have to be expensive or complicated. A few simple habits, calling before you burn, keeping heaters clear, charging devices safely, and checking your heating equipment, can make a big difference. It's about protecting what matters most: your family, home, and peace of mind.







## East Main Street Road Improvements Coming Soon!

**Jim Bowling**

Work will begin soon on the East Main Street Improvement Project, which will transform a three-quarter of a mile portion of the road between Willow Street and Horning Road. As I write this, work is expected to begin in late July/early August, and it most likely will be underway by the time you read this. As always, the start time can vary depending on weather and other variables.

The City of Kent and its partners - the project's Citizen Advisory Committee (CAC), Kent State University, PARTA (Portage Area Regional Transportation Authority), AMATS (Akron Metropolitan Area Transportation Study) and ODOT (Ohio Department of Transportation) developed this \$25.5 million rehabilitation of East Main Street. The goal of the project is to provide an aesthetically pleasing, less cluttered, stress-free gateway into Kent that meets the current demands of all East Main Street's users, including motorists, transit users, cyclists and pedestrians.

The East Main Street Improvement project is also intended to meet the City's Sustainability goals. This includes promoting traffic management, improving pedestrian orientation, protecting neighborhoods, preserving Kent's small-town atmosphere and advocating the use of alternative forms of transportation.

Other congestion and safety improvements include a tree-lined center boulevard and two roundabouts: one at the intersection of South Willow St., East Main St. and Haymaker Parkway, and the other at the East Main St. and Horning Rd. intersection. There will also be wider sidewalks and tree lawn on the north side of the street, decorative streetlights and new bus pull-offs and shelters. The project also includes the addition of 34 dual-port EV charging stations for the public's use on the north side of the Kent State Campus adjacent to East Main Street.

The project will be built in two sections; the first section will be East Main between Luther St. and Horning Rd., and the second section will be East Main from Willow to Luther streets. Traffic will be maintained throughout construction, with one eastbound and one westbound lane and a center left turn lane. Access to adjacent businesses and pedestrian access will be maintained.

Construction is estimated to last three years. More information is available on the East Main Street website page. Once construction begins, updates will be posted to the website. The link to the project page is found on the home page of our webpage at [www.kentohio.gov](http://www.kentohio.gov).

Questions can be directed to Jon Giaquinto in the City Engineering Division at [Jon.Giaquinto@KentOhio.gov](mailto:Jon.Giaquinto@KentOhio.gov) or 330-678-8106. You can also send your email address to Jon if you would like to receive email updates on the project.

## THE CITY OF KENT

### Customer Guide for Identifying Water Service Lines

#### What is a water service line?

A water service line is the pipe that connects the water main to your home or building inlet. Service lines may be made of copper or other materials such as galvanized iron or steel, plastic, brass, or lead. If any portion of the pipe is made of lead, it is called a lead service line (LSL).

#### Why is it important for me to check if my home has a lead or galvanized service line?

Lead is a toxin that poses serious health risks, and infants, young children, and pregnant people are particularly vulnerable to lead exposure. Lead service lines and plumbing materials (including solder, fixtures, and faucets) are the most common sources of lead in a home's drinking water. Galvanized iron or steel pipe can pose a risk if it has ever been connected downstream of a lead service line, as lead can attach to the inner surface of galvanized steel and be released into drinking water over time. Service lines made of galvanized iron or steel that are (or were previously) downstream of LSLs are classified as galvanized requiring replacement (GRR) service line. For more information on the health effects of lead visit the Environmental Protection Agency's (EPA) website

<https://www.epa.gov/ground-water-and-drinking-water/basic-information-about-lead-drinking-water>.

#### Steps to check the materials of the service line.

The following steps will help you determine what the pipe in your home is made of and/or information on how to send the City Of Kent a photo of your service line for verification (regardless of if you are able to determine the material yourself).



##### 1. Find your water meter:

Your water meter may be located inside or outside of the building.

- Typical inside locations include the basement, crawl space, or garage.
- Typical outside locations are between the water main in the street and the house, on the sidewalk, or in the yard.



##### 2. Find your service line

- If your meter is inside, the service line will enter the house near the meter, on the same wall.
- If your meter is outside, the service line most likely enters the house at a point closest to the meter.
- If your service line is not visible, contact your water system for guidance.

# The TREE CITY Bulletin



## 3. Identify your service line material

**Plastic:** The pipe is typically white or gray but can also be other colors. Although plastic does not contribute to lead in drinking water, lead may still be present in other parts of the plumbing system such as faucets and bonding material called solder.

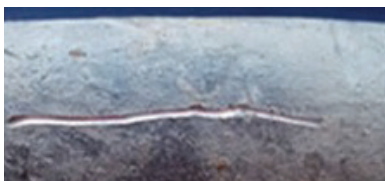


**Metal:** To find out what kind of metal pipe you have, perform two simple tests  
1) a scratch test with a coin or key  
2) a magnet test. You will need a key and/or penny and a magnet for these tests

First, use the coin or key to gently scratch the pipe close to where it comes in through the wall or floor. Then, place the magnet on the pipe and see if it sticks. Using the information below, you can determine what your pipe is made of. Copper. After scratching, if the pipe is the same color as a penny and may have a solid or splotchy film, varying in color from bright green to dark brown, you may have a copper pipe. A scratch test on copper pipe will expose a shiny copper penny color. If you place the magnet on the pipe and it does not stick, this confirms this is not copper.



**Galvanized iron or steel:** If the pipe is silver or gray, hard to scratch with a key or coin you may have an iron or steel pipe. If you place a magnet on the pipe and it sticks to the pipe, you may have galvanized steel pipes. A strong kitchen refrigerator magnet will suffice, in most cases



**Lead:** If a scratch test produces a shiny silver color, your pipe is likely made of lead. If you try to attach the magnet to the pipe and it does not stick, you may have a lead pipe.

## How do I submit my test results to the City Of Kent water system?

### Contact Information:

- <https://survey123.arcgis.com/share/2871f94ead8148d3ba23c4a26b00887d>
- [WaterLineID@KentOhio.gov](mailto:WaterLineID@KentOhio.gov)
- The City Of Kent Central Maintenance at (330) 673-1688

### Resources:

- EPA's Protect Your Tap tool can be found here: <https://www.epa.gov/pyt>.
- For more information on health effects of lead and steps you can take to reduce exposure, visit EPA's website: <https://www.epa.gov/ground-water-and-drinking-water/basic-information-about-lead-drinking-water>

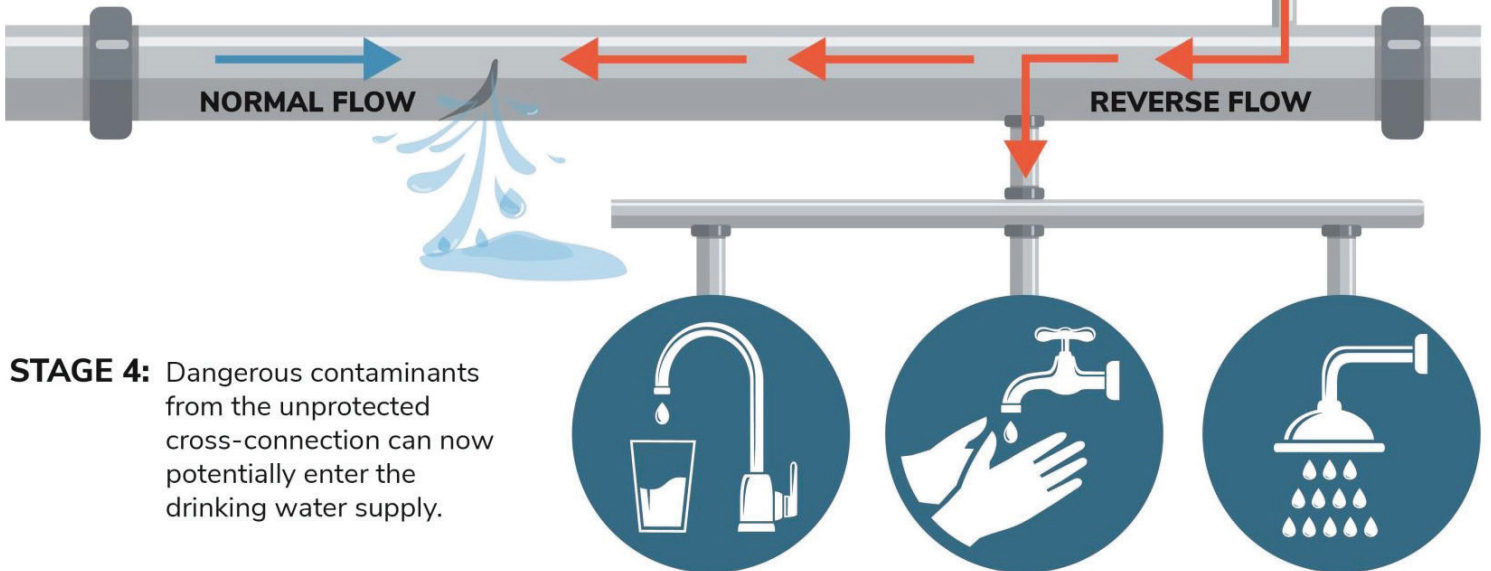


## HOW BACKFLOW CAN HAPPEN

**STAGE 1:** Your home or business has a connection to the public water system not protected by a backflow device.

**STAGE 2:** Water pressure is reduced due to a break in the water main or a fire event using a lot of water suddenly.

**STAGE 3:** The sudden drop in water pressure creates a reverse pressure situation.



**STAGE 4:** Dangerous contaminants from the unprotected cross-connection can now potentially enter the drinking water supply.



## MAYOR ANNOUNCED METER HOLIDAY'S

- 11-28-25 Friday after Thanksgiving
- 12-24-25 Christmas Eve
- 01-02-26 Friday after New Year's

## CITY OF KENT

# WE NEED YOU

## Help Us Get the Lead Out

### What?

- To protect our customers from lead in drinking water, we are working to identify and catalog all service lines, including those in your home.
- To limit cost and disruption to residents, we need your help identifying your home's service line, which connects your residence to the main water distribution pipes.

### How?

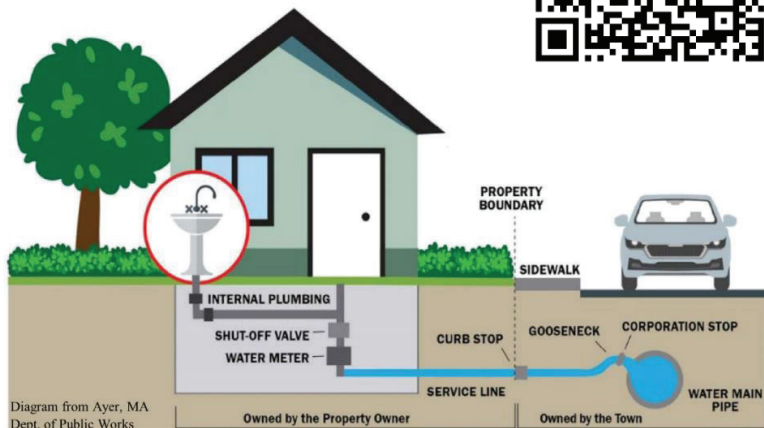
Please use the QR code below, or type in the web address, to complete the short survey. This 5–10-minute survey will walk you through how to identify your home's service line.

City Of Kent survey:  
[rb.gy/vuf700](https://rb.gy/vuf700)



### More Information

- Ohio EPA Lead and Copper  
[www.epa.gov/lead](https://www.epa.gov/lead)



Have Questions? Contact: The City Of Kent Central Maintenance at  
[WaterLineID@KentOhio.gov](mailto:WaterLineID@KentOhio.gov) or (330) 673-1688

# The TREE CITY Bulletin



## YOUTH ATHLETICS

### ON TARGET FENCING

Learn the basics or build advanced skills. This program is open to any skill levels. All equipment included.

**WHEN:** Session 4 Saturdays Sept. 27<sup>th</sup> - Nov. 1<sup>st</sup>  
Session 5 Saturdays Nov. 15<sup>th</sup> - Dec. 27<sup>th</sup>

**BEGINNERS:** 2:00 - 3:30 PM

**INTERMEDIATE:** 3:30 - 5:00 PM

**WHERE:** Kent Recreation Center

**WHO:** Ages 7+

**COST:** \$80 Resident + \$10 Non-Resident Fee

### PORTAGE YOUTH BASKETBALL

The Portage Youth Basketball League brings together teams from around Portage County to compete in recreational basketball. The league starts at Kindergarten and runs through 6<sup>th</sup> Grade.

**WHEN:** Varies by team

**TIME:** Varies by team

**WHERE:** Kent Rec Center & Kent State Rec & Wellness

**WHO:** Kindergarten - 6<sup>th</sup> grade

**COST:** Resident Fee varies by age + \$10 Non-Resident Fee

### YOUTH WRESTLING

Our youth wrestling program is a great chance for your child to get training and learn skills. Not only are there practices but they will also have the chance to attend meets. Make sure to sign up.

**WHEN:** Practices begin Nov. 3<sup>rd</sup>

**TIME:** Mondays and Wednesdays 6:00-7:30 PM

**WHERE:** Practices: Roosevelt Wrestling Room  
Meets: GlenOak High School

**WHO:** Kindergarten - 6<sup>th</sup> grade

**COST:** \$105 for returning wrestlers, \$110-120 for new wrestlers or new singlets



### YOUTH FIELD HOCKEY LEAGUE

Kent will be participating in a youth field hockey league this Fall, including practices and games with other regional teams.

**WHEN:** September 6<sup>th</sup> - October 11<sup>th</sup>

**PRACTICES:** Saturdays, 10:00 - 11:00 AM

**WHERE:** Roosevelt High School Stadium

**WHO:** Girls Entering 5<sup>th</sup> & 6<sup>th</sup> grade

**COST:** \$50 Resident + \$10 Non-Resident Fee



### FIELD HOCKEY CLINIC

Work on skills with Roosevelt High School Coach and Assistant Coaches. Equipment will be provided to participants.

**WHEN:** Saturdays, Sept 6<sup>th</sup>-Oct 11<sup>th</sup> (NO clinic Sept 27<sup>th</sup>)

**TIME:** 10:00 - 11:00 AM

**WHERE:** Roosevelt High School Stadium

**WHO:** 1<sup>st</sup> - 8<sup>th</sup> grade

**COST:** \$30 Residents + \$10 Non-Resident Fee

### CROSS COUNTRY

Practice and prepare for meets throughout the fall to keep your energy and stamina up.

**WHEN:** Aug. 11<sup>th</sup> - mid-October

Monday & Thursday practices  
Wednesday & Saturday Meets

**WHERE:** Stanton Middle School

**WHO:** 3<sup>rd</sup> - 6<sup>th</sup> Grade

**COST:** \$55 Residents + \$10 Non-Resident Fee  
\$10 Late registration fee



# The TREE CITY Bulletin

## SPECIAL EVENTS



### CUYAHOGA RIVER CLEAN UP

If spending the morning wading or floating the Cuyahoga River with a group of people who love nature and want to give back to the community sounds appealing, this is the place to be.

**WHEN:** Aug. 30th

**TIME:** 8:00 AM - roughly 1:00 PM

**WHERE:** John Brown Tannery Park

**WHO:** Open to anyone

**COST:** FREE, online waiver required



### MISSION

To provide exceptional parks, programs, and experiences for all.

### VISION

Our parks and programs improve the health and wellbeing of the whole Kent community and beyond.

### TREE CITY TURKEY TROT

A fun family event with a 5k run/walk and fun run/walk. There will be a free giveaway for to the first 700 registered and a t-shirt to fun run participants.

**WHEN:** Thursday, Nov. 27th

**WHERE:** Roy Smith Shelter House

**WHO:** Open to anyone

**COST:** To be determined



### ART IN THE PARK

Fred Fuller Park hosts over 100 artists, food vendors, two stages of live music, interactive art activities, and youth specific activities across this two day event. Entry is free and the event is open to the public.

**WHEN:** Sept. 6th & 7th

**TIME:** Sat. 10:00 - 6:00PM

Sun. 11:00 - 5:00PM

**WHERE:** Fred Fuller Park

**WHO:** Open to the public

**COST:** FREE ENTRY

## CONTACT INFORMATION

**WEBSITE:** [www.kentparksandrec.com](http://www.kentparksandrec.com)

**PHONE:** (330) 673-8897

**OFFICE:** 497 Middlebury Road  
Kent, OH 44240

**HOURS:** Monday - Friday  
8:00 AM - 5:00 PM

# The TREE CITY Bulletin

## YOUTH PROGRAMS

### BEFORE & AFTER SCHOOL PROGRAM

Arts and crafts, snack, and homework help are included at this great program. We will help to watch your children before and after school and keep them entertained while with us.

**WHEN:** Aug. 21st - June 3rd

**TIME:** 6:30 - 8:30 AM, 3:15 - 6:00 PM Mon. - Fri.

**WHERE:** Davey Elementary, Kent Recreation Center

**WHO:** K-6th graders

**COST:** \$58/AM resident weekly, \$79/PM non-resident weekly  
\$17/AM resident daily, \$22/PM non-resident daily  
\$116/AM & PM resident weekly, \$126/AM & PM non-resident weekly  
\$32/AM & PM resident daily, \$34/AM & PM non-resident daily

### KIDS NIGHT OUT

Drop your kids off for an evening of fun that includes crafts, games, and a movie. Dinner is included!

**WHEN:** Days vary, typically 1<sup>st</sup> Saturday each month

**TIME:** 5:30 - 9:30 PM

**WHERE:** Kent Recreation Center

**WHO:** Ages 4 - 11

**COST:** \$31 First Child/\$21 Additional Child  
+\$2 Non-Resident Fee



### LIL' LEARNERS PRESCHOOL

Our state licensed preschool provides opportunities for children to grow in a healthy, happy, and safe environment with positive guidance, understanding, caring, and nurturing supervision.

**WHEN:** Sept. 8th - May 21st

**TIME:** 9:00 AM - 12:30 PM Mon. - Thurs.

**WHERE:** Roy Smith Shelterhouse

**WHO:** 3 - 5 years old

**COST:** \$75/Residents, + \$10/Non-resident Fee  
+ \$25 one-time registration fee



SCAN ME

## ADULT ATHLETICS

### FALL ADULT 9v9 SOCCER

This is an individual registration but men and women are both able to participate. There needs to be a minimum of 3 women on the roster. Visit our website for additional info.

**WHEN:** Saturdays, Sept. 6th - Oct. 11th

**TIME:** 9:00 AM, 10:30 AM, 12:00 PM

**WHERE:** Stonewater Fields

**WHO:** Ages 18+

**COST:** \$50 per player



### ADULT BASKETBALL

Limited spaces available. NEW! Registration will be individual instead of by team. Visit our website for additional team info.

**WHEN:** Registration will open this fall

**WHERE:** TBD

**WHO:** Ages 18+

**COST:** TBD

### FALL ADULT SOFTBALL

Men's, Women's and Co-ed leagues offered. Limited spaces available in each league. Visit our website for additional league info.

**WHEN:** Games begin week of Sept. 9th

5 weeks of doubleheaders + tournament

**WHERE:** Kramer Ball Fields & Allerton Fields

**WHO:** Ages 18+

**COST:** \$300 Team Fee





## Festival of Lights 2025

### Saturday, November 29, 2025

Grab your coats, scarves, mittens, and cameras and enjoy the magic of the season with your family and friends at the Festival of Lights sponsored by Axxess Family Services on Saturday, November 29, 2025 (Small Business Saturday), and presented by the Kent Area Chamber of Commerce. The event will be held in traditional fashion by the Main Street Bridge and gazebo at the corner of Main Street and Franklin Avenue in downtown Kent.

The festive sounds of the Theodore Roosevelt High School ACEs choir will open the festival by the gazebo at 5:30 PM as the children (and kids at heart) eagerly await Santa's arrival. Accompanied by Kent's Mayor Jerry Fiala, Santa and Mrs. Claus will be arriving by train at 6:00 PM, and after greeting the crowd, the trio will lead the community in a countdown to "light up downtown" to officially kick off the holiday season in Kent.

Adorned in elegant Victorian fashion, the Dickens Carolers from The Light in Kent, will entertain the crowd by singing traditional holiday favorites a cappella while Santa's elves help the children line up safely to visit with Santa and Mrs. Claus in the gazebo. After their visit with Santa, each family will receive a copy of a children's book, courtesy of the Chamber Books for Kids Program. This program is a collaborative effort between the Kent Area Chamber of Commerce, the Kent Free Library, and Kent State University Libraries. Children can write their wish lists to Santa and drop their letters off in the North Pole mailbox while enjoying cookies and hot chocolate. Families can also experience the magic of the season on a horse drawn wagon ride with draft horses from Barrel Run Ranch in Rootstown, as they take family and friends on a relaxing ride downtown to enjoy the holiday lights and festive feel.

After enjoying the festivities, keep your holiday spirit going by supporting local at downtown Kent shops and restaurants (business hours will vary). Limited road closures will be made for the safety of people attending the Festival of Lights. For more information, please contact the KACC office at 330.673.9855 or [dcampbell@kentbiz.com](mailto:dcampbell@kentbiz.com).



# The TREE CITY Bulletin



## Business Ignite

Starting and owning a business can be challenging. That is why the Kent Area Chamber of Commerce has started Business Ignite. Business Ignite is designed to empower, develop, and connect. It offers a platform for entrepreneurs to grow alongside others who truly understand the rollercoaster ride of starting or taking over a business.

Meeting the first Tuesday of every month from 8am-9:30am at Tree City Coffee, this program is open to all not just Chamber members. Business Ignite goes beyond traditional networking by fostering connections between emerging business owners, seasoned mentors, and peers at similar stages of their journey. Though focused on businesses that have started in the last two years, all individuals who are starting a business, thinking about starting a business, or have an established business are welcome to learn.

***Through interactive sessions and personalized guidance, participants get:***

- **Expert Guidance:** Benefit from the wisdom of experienced mentors who share proven strategies and help you steer clear of common entrepreneurial pitfalls.
- **Peer Support:** Connect with a community of like-minded individuals to share experiences, celebrate wins, and navigate challenges together
- **Professional Growth:** Develop the skills, confidence, and professional network you need to elevate your business to the next level.

***Whether you're looking for a sounding board for your ideas or a community that understands your journey, Business Ignite is here to fuel your entrepreneurial success.***

## Yard Waste Transfer Site Info

Located at the entrance to Plum Creek Park  
(across from Cherry Street)

### 2025 Hours of Operation through December 20, 2025

#### Weather Permitting

- Tuesdays, 9:00am - 1:00pm
- Wednesdays, 5:00pm – 8:00pm through October 29, 2025
- Saturdays, 9:00am – 12:00pm

The last day the site will be open during evening hours is  
Wednesday October 29, 2025

#### Drop-Off Yard Waste Rules

- Non-residents are NOT permitted on the site
- No charge for City residents to drop off yard waste
- No commercial use of site is permitted
- No commercial vehicles permitted
- Unauthorized equipment prohibited on premises

The Yard Waste Transfer Site is open to Kent residents only. Resident's must live in and show proof of residency within the City of Kent Corporation Limits (this will be strictly enforced.) A valid driver's license or state ID with your City of Kent address will be required at the gate prior to admission to the site.

The Yard Waste Site is closed during the winter months, it will remain open until December 20th, 2025, weather permitting. During winter weather prior to the anticipated winter closing date of December 20th, please call the Service Department at 330-678-8105 to verify that the site is open.

#### Acceptable Material List

Brush  
Grass  
Firewood  
Leaves  
Weeds

#### Not Accepted

No lumber or wood pallets  
No construction debris  
No trash of any kind  
No logs/stumps  
No full trees  
No large root balls  
No RR ties

**Please remember to empty bags of yard waste and take the bags with you.**

Christmas trees will be collected during the month of January 2026.

Place your tree at the curb, separate from your other trash during this collection period. Please be sure to remove all lights, ornaments, tinsel and plastic bags covering the tree. If you have any questions please feel free to call the Service Department at 330-678-8105.



# The TREE CITY Bulletin

## Fall 2025 Brush Collection Program

The City of Kent's Central Maintenance Division collects brush at the curb twice each year. The 2025 Fall Brush Collection Program will commence Monday, September 29, 2025.

**RESIDENTS ARE ASKED TO PLACE BRUSH AT THE CURB OR EDGE OF STREET BEFORE MONDAY OF THEIR STREET'S SCHEDULED WEEK TO ENSURE COLLECTION.**

**Brush will be collected in the Northeast section  
Monday, September 29th 2025 to Friday, October 3rd 2025**

**Brush will be collected in the Southeast section  
Monday, October 6th 2025 to Friday, October 10th 2025**

**Brush will be collected in the Northwest section  
Monday, October 13th 2025 to Friday, October 17th 2025**

**Brush will be collected in the Southwest section  
Monday, October 20th 2025 to Friday, October 24th 2025**

**Please see page 23 to reference your street's location.**

**CREWS WILL MAKE ONLY ONE PASS DOWN EACH STREET DURING THE SCHEDULED WEEK.**

Do not wait until later in the week to place your brush at the curb, as there will not be a second pass in your neighborhood. Chipping crews will spend a maximum of thirty minutes at each residence. Residents that miss the collection or have an excessive amount of brush will be responsible to dispose of their brush on their own. It may be taken to the City Yard Waste Transfer Site located on Plum Street near the entrance to Plum Creek Park.

Placement of brush should be on the tree lawn and close to the curb or the edge of pavement with the cut ends facing the street. If possible, leave the brush in longer lengths, brush that is too long may be placed lengthwise. Stacked brush must not block the sidewalk or extend onto or over the roadway pavement. Stacked brush containing foreign objects will not be collected. City crews will notify homeowners by placing a notice on their door for any piles of brush that are refused because it is not stacked properly or contains foreign debris. Once the pile of brush has been rejected it must be corrected immediately, or the removal will become the responsibility of the homeowner to dispose of.

If a commercial contractor has been hired to trim or remove trees, the contractor is responsible for the brush removal, and it is not to be placed at the curb.

**Please note the beginning date of the Brush Collection Program for your location and make sure to place brush to be chipped at the curb prior to the start date for your neighborhood.**

**Brush is collected at the curb during one week in each neighborhood during the Spring and Fall of each year.**

**During the remaining months residents can take brush to the City of Kent Yard Waste Transfer Site on Plum Street near the entrance to Plum Creek Park. Please check the City of Kent's website at [www.kentohio.gov](http://www.kentohio.gov) for the current hours of operation for the Yard Waste Transfer Site or call the Service Department at 330-678-8105.**



# The TREE CITY Bulletin

## Fall 2025 Leaf Collection Program

**THE 2025 LEAF COLLECTION PROGRAM WILL COMMENCE NOVEMBER 10, 2025 AND END DECEMBER 19TH 2025. LEAVES WILL NOT BE PICKED UP DURING THE SPRING OF 2026.**

**LEAF COLLECTION CREWS WILL BE ASSIGNED TO EACH QUADRANT OF THE CITY TO PICK UP LEAVES ON A CONTINUAL BASIS THROUGHOUT THE SCHEDULED PROGRAM. THE LEAF COLLECTION TRUCK WILL MAKE ONE PASS DOWN EACH STREET IN YOUR QUADRANT AND WILL THEN REPEAT THE SAME ROUTE THROUGHOUT THE SCHEDULED COLLECTION PERIOD. CREWS WILL PICK UP LEAVES THAT THE EQUIPMENT CAN REACH, IF SOME LEAVES ARE LEFT BEHIND PLEASE MOVE THEM FORWARD AS YOU BRING MORE LEAVES TO THE CURB.**

### **LOOSE LEAVES**

Residents are asked to rake their leaves to the curb regularly as they accumulate. Please rake leaves to the curb, but not into the street. If there is not enough room for loose leaves, on the tree lawn in front of your home please bag your leaves and call the Service Department at 330-678-8105 to request a pickup. Ordinance 311.01 prohibits placing debris on streets and sidewalks to prevent accidents. Leaves placed in the street can block storm sewers resulting in flooding and property damage. If you hire a landscape contractor to blow your leaves to the curb, please be sure they do not blow leaves into the street.

Do not mix other items with your leaves (branches, trash, grass clippings, dirt or other foreign objects). The City will reject your leaves if these guidelines are not followed, and will place a notice on your door. When the foreign objects are removed from the leaves, crews will return to collect your leaves as early as possible

**BRUSH IS PICKED UP DURING THE MONTH OF OCTOBER. PLEASE REFER TO THE BRUSH COLLECTION SCHEDULE ON PAGE 21. BRUSH LEFT ON THE CURB DURING THE LEAF COLLECTION PROGRAM WILL NOT BE PICKED UP BY CITY CREWS. PLEASE KEEP IN MIND THAT LEAVES ARE ONLY COLLECTED DURING THE FALL OF EACH YEAR, LEAVES WILL NOT BE COLLECTED BY CITY CREWS IN THE SPRING OF THE FOLLOWING YEAR.**

### **BAGGED LEAVES**

If you prefer to bag your leaves to be picked up during the Fall Leaf Collection Program, please place them on the curb and call the Service Department at 330-678-8105 to request a bagged leaf pickup. The deadline for bagged leaf pickup requests is Friday, December 19th 2025.

### **LEAF DROP OFF**

If you prefer to haul your own leaves, you may take them to the Yard Waste Site, located at the entrance to Plum Creek Park. Please remember to empty the bags and take them with you when dropping leaves at the site. Please check the City of Kent's website at [www.kentohio.gov](http://www.kentohio.gov) for the current hours of operation for the Yard Waste Transfer Site or call the Service Department at 330-678-8105.

**Please remember that the Leaf Collection Program ends December 19th 2025  
and the City will not pick up leaves after this date.**

**If you have any questions regarding leaf collection, please call the Service Department at 330-678-8105.**





# The TREE CITY Bulletin



## NORTHWEST

Adamle Drive  
Admore Drive  
Adrian Drive  
Allen Drive  
Bruce Drive  
Bryce Road & Way  
Catlin Court  
Chestnut Street, N  
Clarkview Circle  
Cottage Gate Drive  
Crestview Circle  
Cuyahoga St (West of Hudson Rd)  
Deleone Drive

Delores Drive  
Earl Avenue  
Edgewater Circle  
Erin Drive  
Evergreen Drive  
Fairchild Avenue  
Fieldstone Drive  
Forest Drive  
Gougler Avenue  
Governors Circle  
Harold Street  
High Ridge Lane  
Hollister Drive  
Hudson Road

Kevin Drive  
Lakewood Circle  
Longcoy Avenue  
Lowell Drive  
Majors Lane  
Mantua Street, N (Main to Crain)  
McKinney Boulevard  
Michaels Drive  
Nathan Drive  
Naturewood Circle  
Newcomer Road (East side only)  
Nicholas Drive

Nottingham Circle  
Park Avenue  
Pearl Street, N  
Phillip Drive  
Pioneer Avenue  
Prospect Street, N  
Quay Boulevard  
Randall Drive  
Red Fern Circle  
Robert Drive  
Rockwell Street  
Rollins Circle  
Roy Marsh Drive  
Shady Lakes Drive

Shorewood Circle  
Stonewater Drive  
Stinaff Street (West of Hudson Rd)  
Sunset Way Circle & Blvd  
Verona Avenue  
Whetstone Drive  
Whitewood Drive  
Whittier Drive  
Windward Lane  
Woodard Avenue  
Wrens Hollow Circle

---

## SOUTHWEST

Ada Street  
Akron Boulevard  
Beech Drive  
Brentwood Drive  
Carol Drive  
Chelton Drive  
Chestnut Street, S  
Colleen Drive  
Deidrick Road  
Denise Drive  
Elno Avenue  
Emich Drive

Eton Road  
Francis Street, N & S  
Gale Drive  
Gardenvue Street  
Garrett Street  
Garth Drive  
Gill Drive  
Grove Avenue  
Hampton Road  
Hughey Drive  
Irma Street  
Janet Drive

Jessie Avenue  
Judith Street  
Laurel Drive  
Lawrence Court  
Leonard Boulevard  
Longmere Drive  
Louise Street  
Lower Drive  
Manchester Avenue  
Mantua Street, S  
Main Street, W  
Marilyn Street

Meadow Drive  
Meredith Street  
Middlebury Road  
Munroe Falls-Kent Road  
Norwood Street  
Overbrook Drive  
Parmalee Street  
Paulus Drive  
Pearl Street, S  
Prospect Street, S  
River Street  
Roosevelt Avenue

Sheri Drive  
Short Street  
Silver Meadows Boulevard  
Spaulding Drive  
Stow Street  
Sunrise Boulevard  
Suzanne Drive  
Tallmadge Avenue  
VFW Parkway  
Yacavona Drive

---

## SOUTHEAST

Allerton Street  
Artemis Drive  
Athena Drive  
Avondale Street  
Beal Court  
Benjamin Court  
Berkeley Street  
Beryl Drive  
Bowman Drive  
Burnett Road (5439 only)

Cedar Street  
Chadwick Road  
Cherry Street  
Currie Hall Parkway  
DePeyster Street, S  
Dodge Street  
Elm Street, E & W  
Franklin Avenue  
Hall Street, E & W  
Harris Street  
High Street

Ivan Drive  
Joyanne Court  
Lincoln Street, S  
Loop Road  
Mae Street  
Maple Street  
Marigold Lane  
Martinel Road  
Meloy Road  
Mogadore Road  
Morris Road

Oak Street, E & W  
Olympus Drive  
Overholt Road  
Pine Street  
Primrose Lane  
Rellim Drive  
School Street, E & W  
Shaw Drive  
St. Clair Avenue  
Statesman Place  
Summit Street, E & W

Sunnybrook Road  
Valleyview Street  
Vine Street & Court  
Walnut Street  
Water Street, S  
West Street  
Williams Street, E & W  
Willow Street Ext, S

---

## NORTHEAST

Anna Avenue  
Beechmont Place  
Beechwood Drive  
Birchwood Circle  
Brady Street  
Burns Court  
Burr Oak Drive  
Carthage Street  
Cindy Circle  
College Avenue, E & W  
College Court  
Columbus Street  
Costley Court  
Crain Avenue  
Cuyahoga St (East of Hudson Rd)  
Dansel Street

Davey Avenue  
Day Street, E & W  
DePeyster Street, N  
Dominion Drive  
Doramor Street  
Edgewood Drive  
Elizabeth Court  
Elmwood Drive  
Erie Street, E & W  
Fairview Drive  
First Ave (1600 block only) Frances Drive  
Gatun Street  
Glad Boulevard  
Graham Avenue  
Grant Street, E & W  
Harvey Street

Highland Avenue  
Holly Drive  
Horning Road  
King Avenue  
Lake Street  
Lincoln Street, N  
Linden Road  
Lock Street  
Luther Avenue  
Main Street, E  
Mantua Street, N (North of Crain)  
Marvin Street  
Mason Avenue  
Miller Avenue  
Needham Avenue  
Oakwood Drive

Orchard Street  
Overlook Drive  
Perry Street  
Pleasant Avenue  
Portage Street  
River Bend Boulevard  
River Edge Drive  
River Park Drive  
Riverside Court  
River Trail Drive  
Roscoe Drive  
Rustic Bridge Drive  
Rustic Knoll Drive  
Sherman Street  
Standing Rock Avenue  
Starr Avenue  
Steele Street

Stinaff Street (East of Hudson Rd)  
Temple Avenue  
Tonkin Street  
University Drive  
Virginia Avenue  
Walter Street  
Water Street, N  
Willow Street, N & S  
Wilson Avenue  
Wolcott Avenue  
Woodhill Drive  
Woodside Drive

**City Manager's Office  
301 S. Depeyster  
Kent, Ohio 44240**

Presorted Standard  
U.S. Postage  
**PAID**  
Permit No. 46  
Kent, Ohio

## **We Want To Hear From You...**

Please write your questions, comments or suggestions regarding city government on this form. Return the form either by mail, or drop it off at the City Manager's Office at 301 S. Depeyster, Kent, Ohio 44240. If you provide your name and address, we will respond to you directly. With your permission, the response may be published in a future issue of the Tree City Bulletin. If you prefer to comment anonymously, we may attempt to respond in a future issue.

---

---

---

---

---

### **Optional Information:**

Name: \_\_\_\_\_ Phone: \_\_\_\_\_

Address: \_\_\_\_\_



**May we publish your questions/comments/suggestions?**

**YES**

**NO**

**May we publish your name? (Address will NOT be published)**

**YES**

**NO**